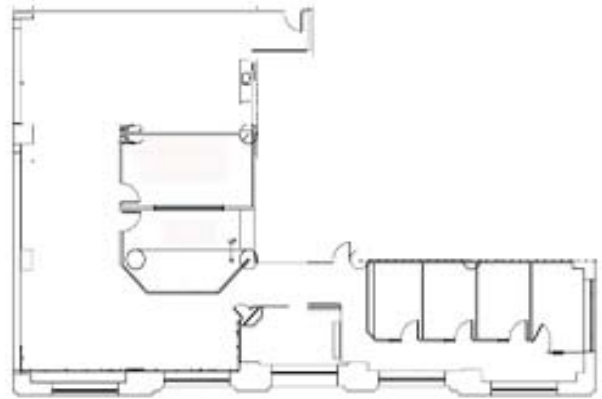


For Lease at The Balfour Building

*119 Spadina Avenue on the North/West corner of
Adelaide & Spadina*

4,405 sq ft of character space available on May 1, 2010
for \$17.75 net*



A built out corner suite with operable large decorative windows, this second floor walk up has great exposure. This suite is contiguous to 3,395 sq ft bringing it to a total of 7,800 sq ft available!

For further information, or to book a tour please contact Honor Sewell and Jennifer Lockyer at 416.593.6420



** All WTF Group rates are based on a 5 year term with 5% annual increases.*