

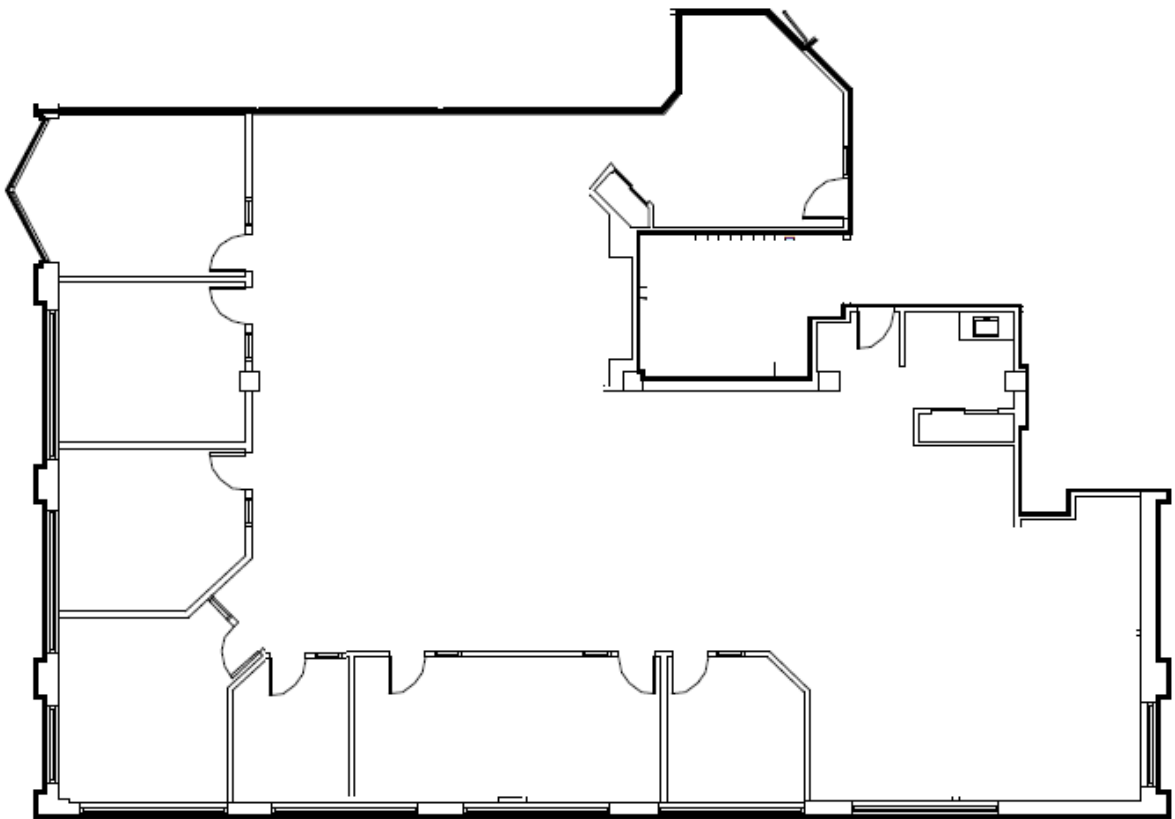
Suite 2P300 – 4,424 SQ.FT.

RENTAL INFORMATION

\$26.75 p.s.f net with 5% annual increases (based on a 5-year term)

SUITE DESCRIPTION

Brick and beam suite. Light-filled space with 6 offices, boardroom, kitchenette and open plan workspace.



*All rates subject to change without notice.